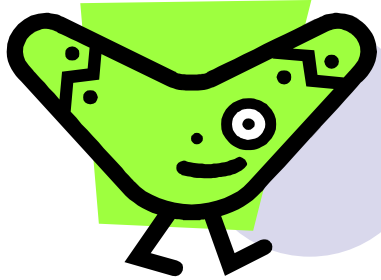


The Boom!...erang Project



By Tynedale Middle School



Why Boom!...erang?

- **Bringing all communities within the North East together.**
- **An Australian theme- a lot of people dream of visiting.**
- **BUT... with today's costs and rising taxes, this can be too expensive.**
- **Lets bring Australia to US in Blyth!.**
- **So Boom!...erang was born!**

Continued on next slide.

We Chose Boom!...erang

Because...

- A Boomerang is an Australian object.
- We got our slogan from Boomerangs as boomerangs always return
- So we think our customers will return

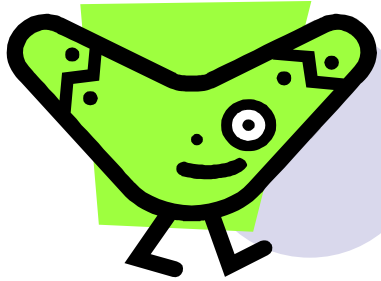
The Logo:

Boom!...erang



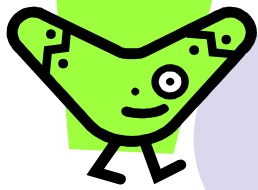
The Slogan:

**You're BOUND
to return!**



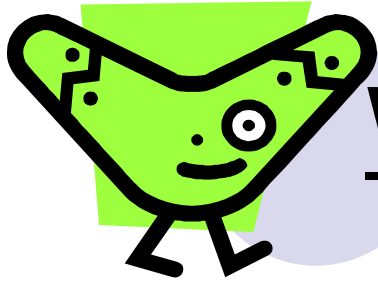
Our Proposed Site For Our Boom!...erang Project.





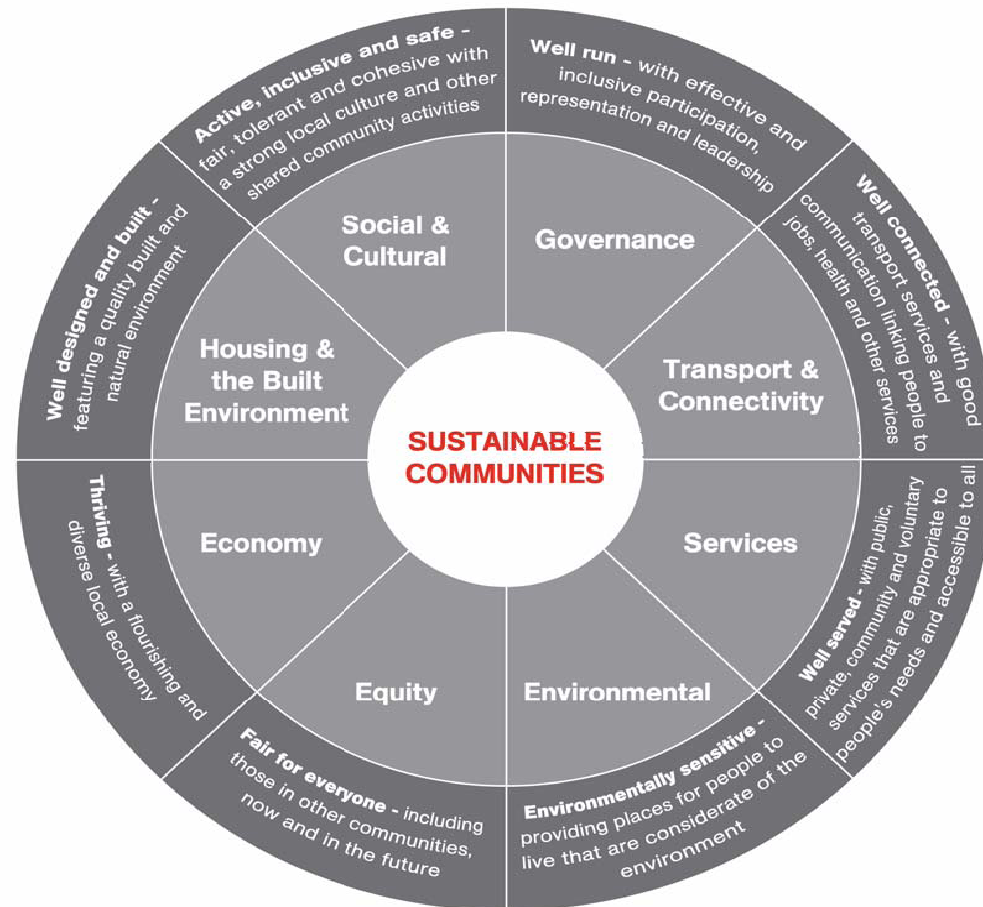
Location, Location, Location!

- The history of the location is a old colliery site, called 'Bates Pit'.
- We chose the site as it is a brown field.
- This site is 5 minutes from our school.
- The site is located just off Cowpen road.
- Cowpen road is the main road linking all communities through Blyth.

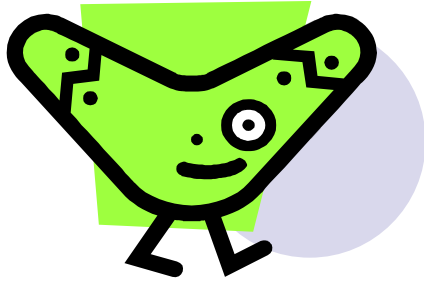


Will the Boom!...erang Project Be Sustainable?

The Egan Wheel



To answer this we will have to look at the Egan Wheel.



Governance

How will we run our centre?

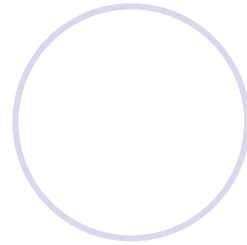
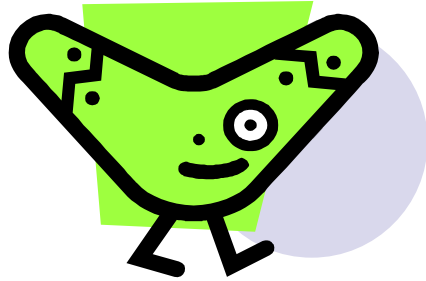
- For this centre to be run well, we will decide on staff who are friendly and have a sense of humour.
- We would employ team leaders, who will be involved in hands on activities making sure the running of the centre is smooth, keeping the customers happy.



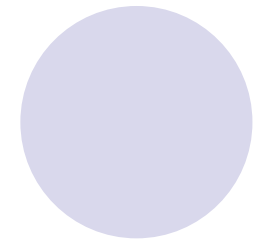
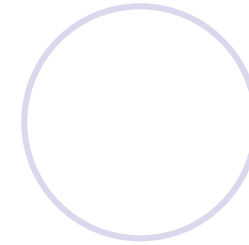
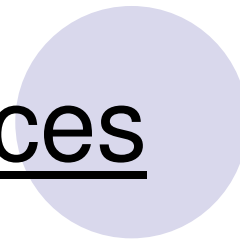
Transport & Connectivity

How will we connect our centre with other communities?

- The centre will provide a Boom!...erang Bus.
- The bus will be disabled friendly with wheel chair ramps.



Services



Will our centre provide a good service?

The services this centre will provide are:

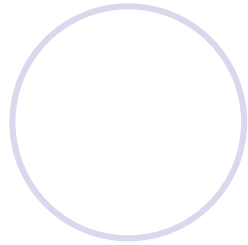
- Transport to and from the centre for those who do not have a means of getting there.
- A whole range of activities which will be available to everyone.
- Work experience in management, customer service, childminding, advertising and much more.



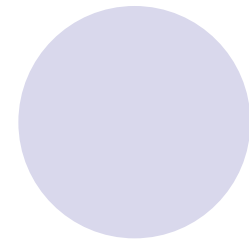
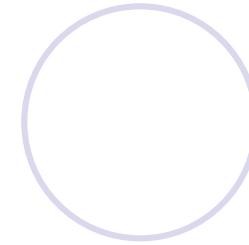
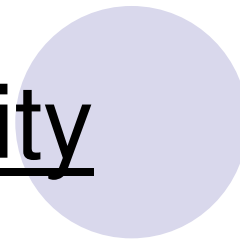
Environmental

Will our centre be environmentally friendly?

- The Boom!...erang centre will be environmentally friendly. We will do this by using only renewable energy sources.
- There will also be solar panels on the roof of the building.
- All of our packaging will be recycled, and our food waste will be composted.

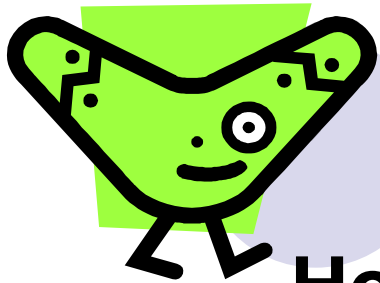


Equity



How will we make our centre fair for everyone?

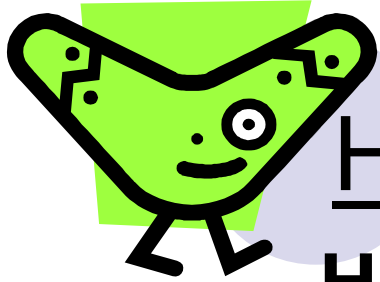
- Our Boom!...erang project will have mobile units which will go out to other communities and give them a chance to sample some of the activities.
- All of our activities are available to all members of the community, this means that everyone gets their fair share.



Economy

How will we keep our centre thriving?

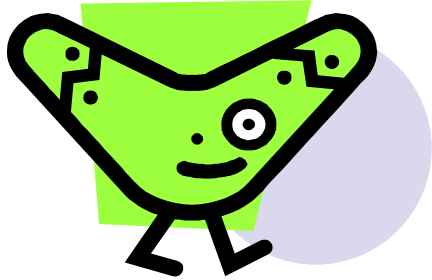
- We will build our centre with recycled materials that way the cost of the structure will be lower
- We will also charge a small fee to get in to the centre. This will make sure that the centre can keep on running but, people still come.
- Our café, leisure facilities and mobile activities will also be increasing our total profit.



Housing & The Built Environment

How will we make our centre well built and designed?

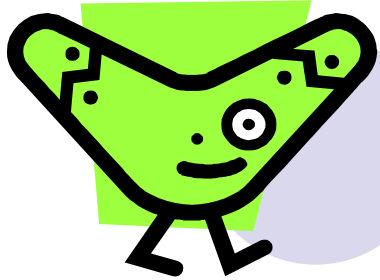
- Our centre will have to be somewhere which is not too remote but not in the centre of a town. This way it will not get trashed by youths, and it will not be too far away for other people in other communities.
- The centre will have to be built somewhere which will not be affected by pollution and not too close to housing because this might upset some residents.



Social & Cultural

How will we link our centre to the social and cultural parts of Blyth?

- The Boom!...erang centre will have strong links to Australian history, this also links in with our theme.
- We will also have links with Blyth history, this will show the future generations all about how Blyth came to be as it is.



Accounts & Finance

- Our financial accounts will be taken seriously and we will use our money wisely and not spend it on unnecessary items.
- Our trained accountants will look at ways of using profits, grants and sponsorship in the most beneficial way for both community and staff.



And this is just the beginning;
Eventually, Boom!...erang will take over the
world. (But it the nicest possible way)

Thank you for watching ;)

Tynedale Middle